

Illinois Department of Transportation
Attn: Tom Gallenbach
201 W. Center Court
Schaumburg, Illinois 60196

December 13, 2010

This follow up evaluation report is being submitted to meet a requirement for the Illinois Department of Transportation (IDOT) after the implementation of the Running Red Light Enforcement Systems (RLR) has been installed and operational in the City of Oak Forest. This Report includes the following required information:

- Intersection Location
- Date of implementation
- RLR camera system manufacturer and contractor name
- Crash Data specific to RLR location(s) for the three (3) years prior to and for the period post RLR installation:
- Analysis of crash data
- Signal timing changes
- Traffic volumes pre/post installation of RLR
- Recommendations
- Summary of adjudication experience and results

Intersection locations:

159th St. @ Cicero Ave.
167th St. @ Cicero Ave.

RLR approaches:

East & West
North & South

Date of implementation:

September 13, 2008

RLR system manufacturer and contractor name:

Gatso USA, Inc.
9000 Cummings Center
Suite 321-U
Beverly, MA 01915

Crash Data Three Years Prior / Post Period Data:

159th & Cicero Ave.

Year:	2005	2006	2007	RLR Installed 2008	2009	Crash Comparison 2007 vs 2009
Type of crashes:						
Turning:	15	9	10	10	9	-1
Rear End:	29	26	31	17	17	-14
Angle:	4	1	4	2	0	-4
Fixed Object:	0	2	3	4	0	-3
Sideswipe:	0	0	2	2	2	0
Total Crashes:	48	39	50	35	28	-22

167th Cicero Ave.

Year:	2005	2006	2007	RLR Installed 2008	2009	Crash Comparison 2007 vs.2009
Type of Crash:						
Turning:	12	11	12	10	10	-2
Rear end:	16	14	16	13	9	-7
Angle:	1	3	1	1	0	-1
Fixed Object:	3	3	4	1	1	-3
Sideswipe:	3	1	2	0	4	2
Other object:	1	0	0	0	0	0
Total Crashes:	36	32	35	25	24	-11

Summary of Crash Data:

The City of Oak Forest experienced a significant decrease in crashes at both intersections equipped with the RLR systems. 159th Cicero dropped from 50 crashes for pre installation 2007 to 28 crashes for post installation year 2009 totaling 22 less crashes for the year.

167th Cicero dropped from 35 crashes for pre installation year 2007 to 24 crashes post installation year 2009 totaling 11 less crashes for the year. Totaling a 33 less crashes for the year at these two intersections

*Source of crash data obtained from the Illinois Department of Transportation. * see attachments

Signal Timing:

The signal timings are controlled by Illinois Department of Transportation (IDOT) and set to their specifications.

Traffic Volumes before and after RLR Camera System Installation:

Illinois Department of Transportation maintains both of the City's RLR intersections making traffic volumes available via their web site. The traffic volumes for the intersections are: 159th St. post installation published average daily count is 26100 for year 2010. Pre installation average daily count 26500 for year 2007 showing a reduction of 400 less vehicles per day.

167th Cicero Ave. traffic volumes are post installation for year 2010 18100 average daily count and pre installation for year 2007 19100 showing a reduction of 1000 cars per day.

Recommendations to further reduce red light violations and severe crashes and to improve operations of the intersections:

Upon reviewing the analysis of the crash data RLR systems have caused a reduction of crashes by 33 total for both intersections and looking at the statistics they are showing a decline each year since installed and appears the three year post evaluation possibly will show even a further reduction in crashes. Possible changes to the intersection would be studying lowering the speed limit on Cicero Ave. from 45 mph down to 40 mph.

Summary of adjudication experience and results:

The City in the first year issued a total of 3502 citations for the first year of operation from 9.13.08 thru 09.13.09 and 1438 citations from 09.13.09 thru 09.13.10 which show a significant reduction in violations with some causes being from a construction project at the intersection of 167 for many months causing traffic to be directed by flagmen and also drivers are getting used to stopping vs. challenging the traffic light and some equipment upgrades.

The monthly hearing has on average about five to seven people that appear to view and contest their violations. The city has been care full in which violations we issue and our current practices match the recent change in the law effective 01-01-11 concerning the RLR systems.

Conclusion:

With the Illinois Department of Transportation granting the City the permission to install the RLR equipment which was relatively new to Illinois at the time and very popular this date, they have partnered in reducing crashes significantly upon IDOTS roads within the City of Oak Forest.

Respectfully Submitted,

Lt. Koschnitzky #100

Traffic Hearing Administrator
Oak Forest Police Department

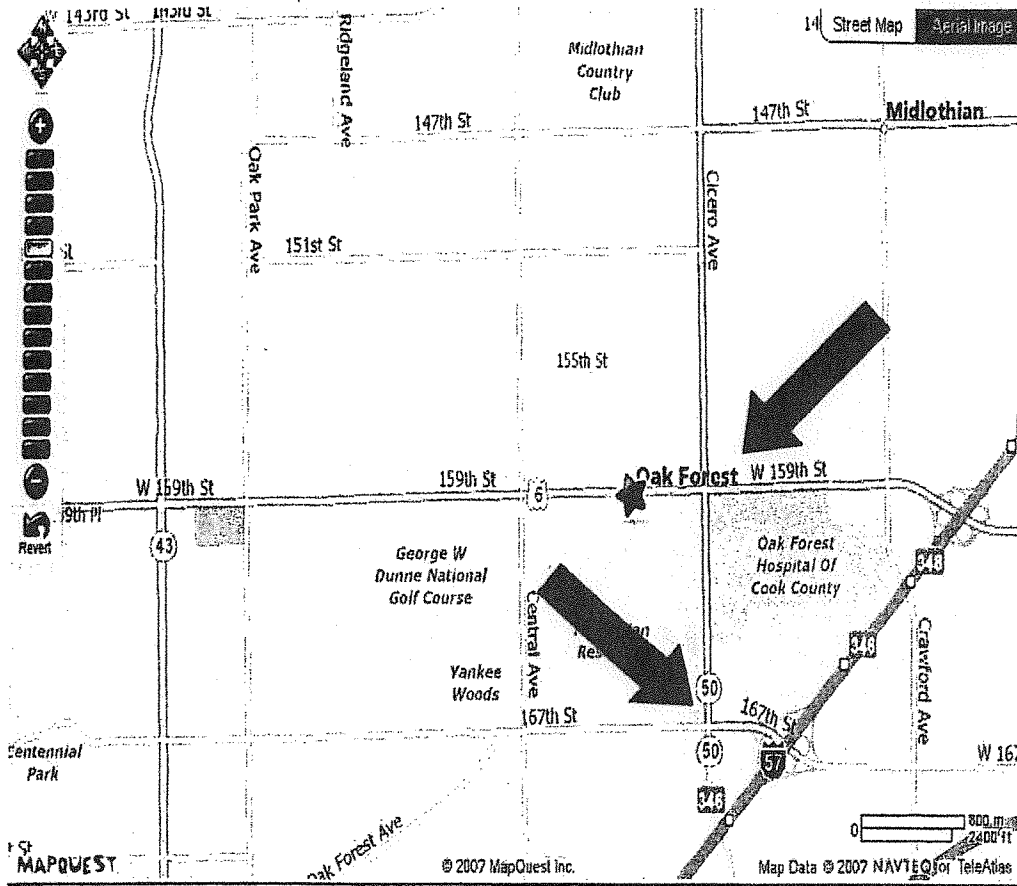
Enclosed:

Crash Stats 05.06.07.08.09

Traffic Volumes

Camera Locations

Oak Forest Camera Locations

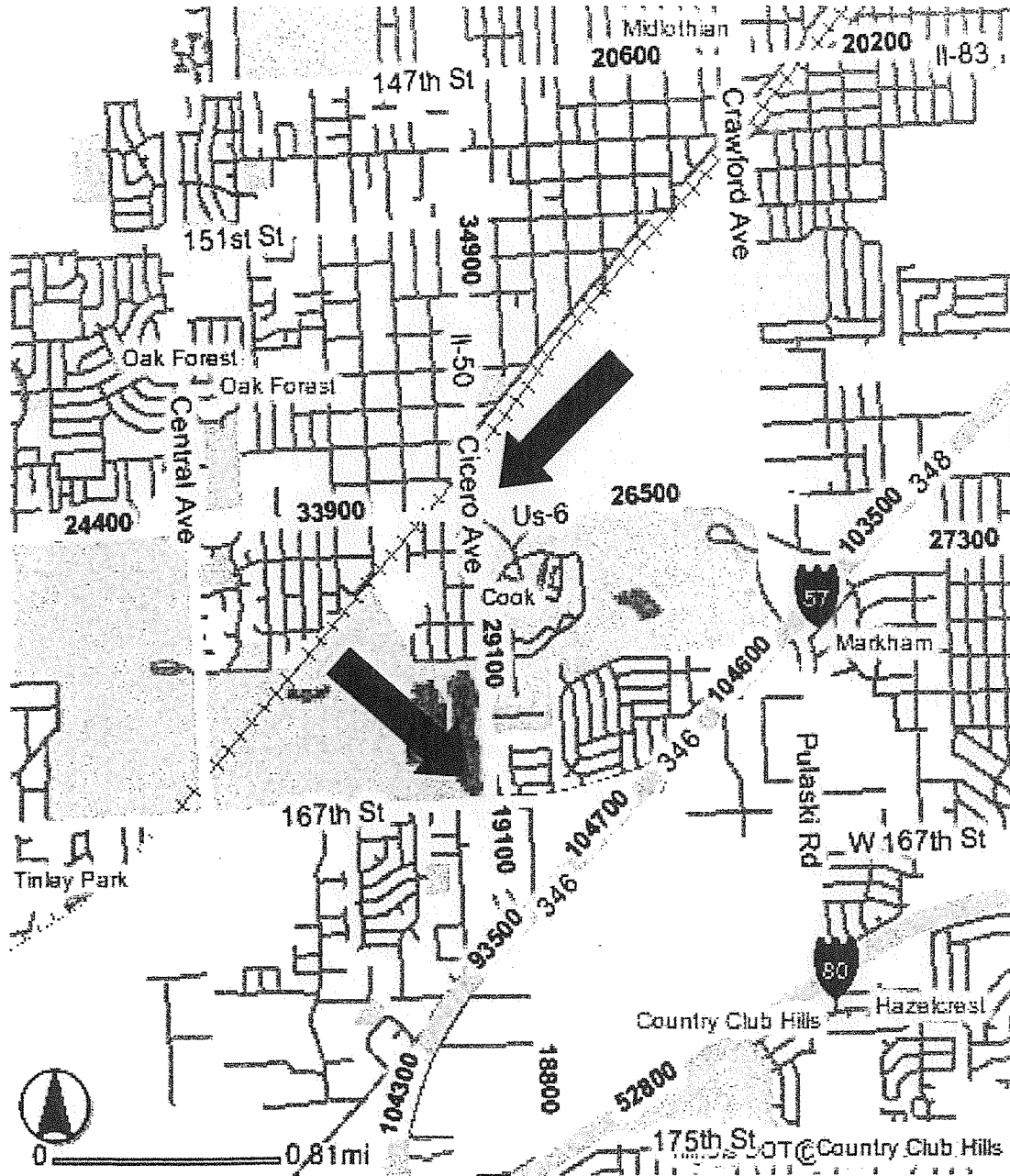


Oak Forest Traffic Volumes

Traffic Volumes

Average daily and peak period traffic volumes, if available.
(IDOT March 1, 2007 memorandum)

Average Annual Daily Traffic



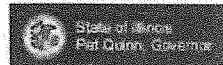
Source -IDOT

IDOT

City of Oak Forest

12/12/2007

Oak Forest Traffic Volumes



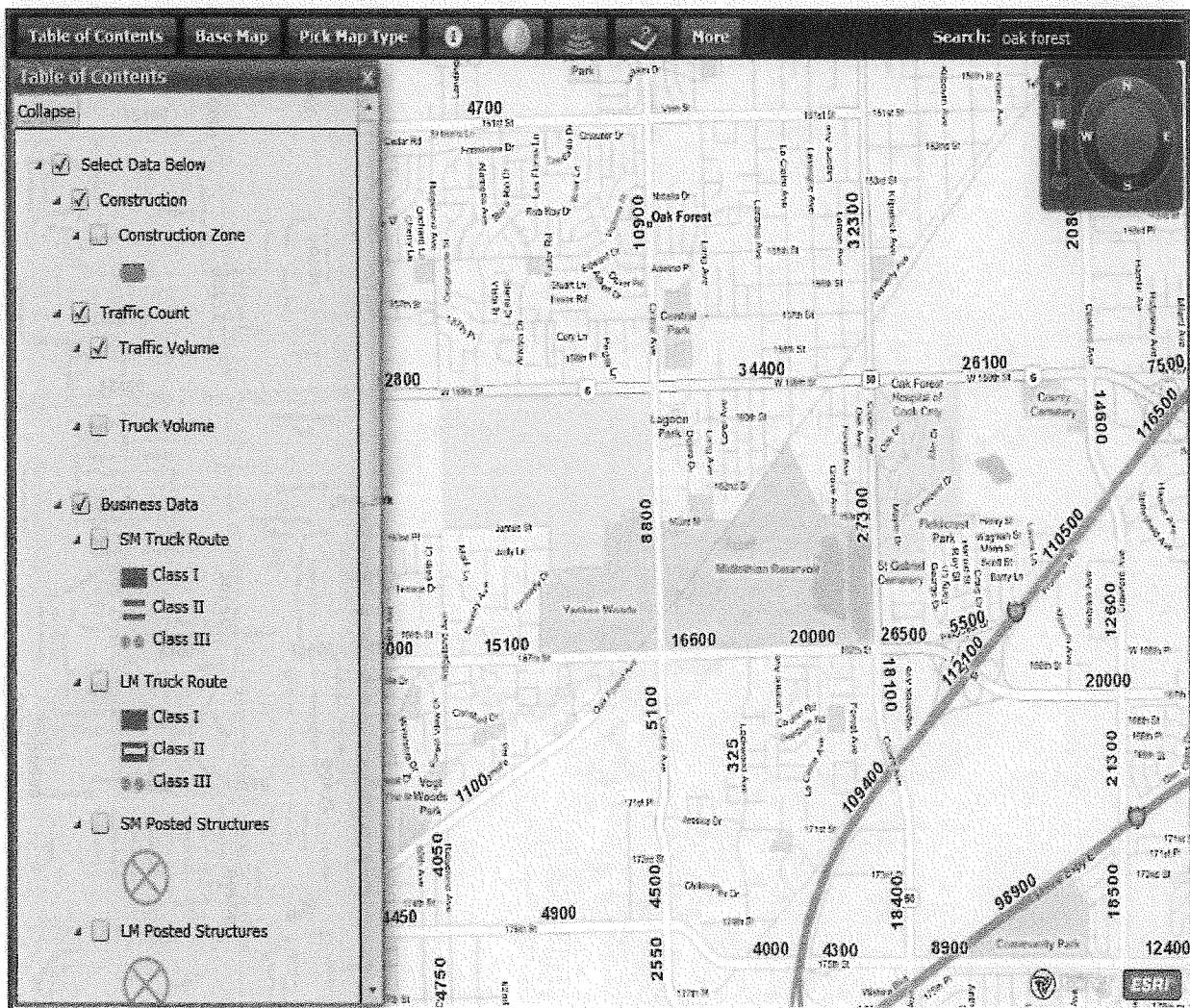
Home Map Road Construction Winter Road Conditions

"Base Map" - Changes the Base Map view. Choose between ROADS, AERIAL IMAGES and AERIAL MAP WITH LABELS.

"Pick Map Type" - Point to the "Pick Map Type" button below and select from the drop-down.

"Table of Contents" - Use button below to toggle the data panel. The check boxes control data visibility depending on map scale. Click the 'triangle' or the 'Expand' and/or 'Collapse' buttons to see data viewing options.

"Search" - type in a place name and the map will be centered at that location ("Springfield", "Buckingham Fountain").



Illinois Department of Transportation 2300 S. Dirksen Parkway Springfield, IL 62764 - [Contact](#)

Disclaimer



Collision Diagram

1/1/2005 to 12/31/2005

Report No : SDM-RC002
 Sorted by : Mile / Date / ICN

Oak Forest Crash Statistics @ 159th

Crash Route: US006 | From MileStation: 166.15 to 166.15 | County : Cook | Intersection Related: Intersections | *See Notes at End of Report.

TOTAL CRASHES	FATAL CRASHES	A INJURY CRASHES	B INJURY CRASHES	C INJURY CRASHES	PROPERTY DAMAGE CRASHES	TOTAL KILLED	TOTAL INJURED	A INJURIES	B INJURIES	C INJURIES
48	0	3	5	5	35	0	20	4	4	8

Type of Crash	Total	%	Day of Wk	Total	%	Hour of Day	Total	%	Vehicle Type	Total	%
10-Turning	15	31.3%	Monday	4	8.3%	Midnight	2	4.2%	Motorcycle (over 150cc)	1	1.0%
11-Rear end	29	60.4%	Tuesday	7	14.6%	01 AM	1	2.1%	Passenger	68	68.0%
15-Angle	4	8.3%	Wednesday	7	14.6%	06 AM	3	6.3%	Pickup	10	10.0%
TOTAL:	48		Thursday	10	20.8%	07 AM	2	4.2%	Sport utility vehicle (SUV)	6	6.0%
			Friday	7	14.6%	08 AM	1	2.1%	Truck - single unit	2	2.0%
			Saturday	9	18.8%	09 AM	3	6.3%	Unknown/NA	2	2.0%
			Sunday	4	8.3%	10 AM	3	6.3%	Van/mini van	11	11.0%
			TOTAL:	48		11 AM	3	6.3%	TOTAL:	100	
						Noon	1	2.1%			
						1 PM	2	4.2%			
						2 PM	6	12.5%			
						3 PM	3	6.3%			
						4 PM	4	8.3%			
						5 PM	5	10.4%			
						6 PM	2	4.2%			
						8 PM	4	8.3%			
						9 PM	2	4.2%			
						11 PM	1	2.1%			
						TOTAL:	48				



Report No : SDM-RC002
 Sorted by : Mile / Date / ICN

Oak Forest Crash Statistics @ 159th

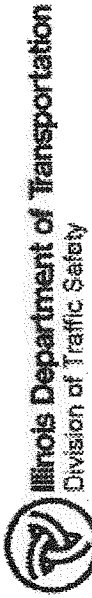
Collision Diagram

1/1/2006 to 12/31/2006

Crash Route: US006 | From MileStation 166.15 to 166.15 | County : Cook | Intersection Related: Intersections | *See Notes at End of Report.

TOTAL CRASHES	FATAL CRASHES	A INJURY CRASHES	B INJURY CRASHES	C INJURY CRASHES	PROPERTY DAMAGE CRASHES	TOTAL KILLED	TOTAL INJURED	A INJURIES	B INJURIES	C INJURIES
39	0	0	5	3	31	0	13	0	8	5

Type of Crash	Total	%	Day of Wk	Total	%	Hour of Day	Total	%	Vehicle Type	Total	%
10-Turning	9	23.1%	Monday	3	7.7%	Midnight	1	2.6%	Passenger	56	70.0%
11-Rear end	26	66.7%	Tuesday	4	10.3%	04 AM	1	2.6%	Pickup	4	5.0%
12-Sideswipe same direction	1	2.6%	Wednesday	10	25.6%	05 AM	1	2.6%	Sport utility vehicle (SUV)	9	11.3%
15-Angle	1	2.6%	Thursday	7	17.9%	07 AM	2	5.1%	Tractor w/ semi-trailer	1	1.3%
6-Fixed object	2	5.1%	Friday	6	15.4%	08 AM	4	10.3%	Truck - single unit	1	1.3%
TOTAL:	39		Saturday	5	12.8%	09 AM	1	2.6%	Unknown/NA	2	2.5%
			Sunday	4	10.3%	11 AM	1	2.6%	Van/mini van	7	8.8%
			TOTAL:	39		Noon	4	10.3%	TOTAL:	80	
						1 PM	1	2.6%			
						2 PM	3	7.7%			
						3 PM	4	10.3%			
						4 PM	5	12.8%			
						5 PM	4	10.3%			
						7 PM	1	2.6%			
						8 PM	1	2.6%			
						9 PM	2	5.1%			
						10 PM	2	5.1%			
						11 PM	1	2.6%			
						TOTAL:	39				



Report No : SDM-RC002
 Sorted by : Mile / Date / ICM

Oak Forest Crash Statistics @ 159th

Collision Diagram 1/1/2007 to 12/31/2007

Crash Route: US006 | From MileStation 166.15 to 166.15 | County : Cook | Intersection Related: Intersections | *See Notes at End of Report.

TOTAL CRASHES	FATAL CRASHES	A INJURY CRASHES	B INJURY CRASHES	C INJURY CRASHES	PROPERTY DAMAGE CRASHES	TOTAL KILLED	TOTAL INJURED	A INJURIES	B INJURIES	C INJURIES
50	0	0	4	4	42	0	13	0	0	5

Type of Crash	Total	%	Day of Wk	Total	%	Hour of Day	Total	%	Vehicle Type	Total	%
10-Turning	10	20.0%	Monday	8	16.0%	Midnight	1	2.0%	Motorcycle (over 150cc)	1	1.0%
11-Rear end	31	62.0%	Tuesday	10	20.0%	01 AM	1	2.0%	Other	1	1.0%
12-Sideswipe same direction	2	4.0%	Wednesday	6	12.0%	04 AM	1	2.0%	Passenger	75	71.4%
15-Angle	4	8.0%	Thursday	6	12.0%	06 AM	3	6.0%	Pickup	7	6.7%
6-Fixed object	3	6.0%	Friday	7	14.0%	07 AM	2	4.0%	Sport utility vehicle (SUV)	10	9.5%
TOTAL:	50		Saturday	6	12.0%	09 AM	2	4.0%	Tractor w semi-trailer	1	1.0%
			Sunday	7	14.0%	10 AM	1	2.0%	Unknown/NA	4	3.8%
			TOTAL:	50		11 AM	3	6.0%	Van/minivan	6	5.7%
						Noon	2	4.0%	TOTAL:	105	
						1 PM	2	4.0%			
						2 PM	6	12.0%			
						3 PM	5	10.0%			
						4 PM	6	12.0%			
						5 PM	6	12.0%			
						6 PM	2	4.0%			
						7 PM	1	2.0%			
						9 PM	2	4.0%			
						10 PM	4	8.0%			
						TOTAL:	50				



Report No : SDM-RC002
 Sorted by : Mile / Date / ICN

Oak Forest Crash Statistics @ 159th

Collision Diagram

1/1/2008 to 12/31/2008

Crash Route: US006 | From MileStation 165.78 to 165.78 | County : Cook | Intersection Related: Intersections | *See Notes at End of Report.

TOTAL CRASHES	FATAL CRASHES	A INJURY CRASHES	B INJURY CRASHES	C INJURY CRASHES	PROPERTY DAMAGE CRASHES	TOTAL KILLED	TOTAL INJURED	A INJURIES	B INJURIES	C INJURIES
35	0	3	0	3	29	0	7	4	0	3

Type of Crash	Total	%	Day of Wk	Total	%	Hour of Day	Total	%	Vehicle Type	Total	%
10-Turning	10	28.6%	Monday	6	17.1%	01 AM	1	2.9%	Passenger	41	59.4%
11-Rear end	17	48.6%	Tuesday	7	20.0%	04 AM	2	5.7%	Pickup	5	7.2%
12-Sideswipe same direction	1	2.9%	Wednesday	7	20.0%	06 AM	1	2.9%	Sport utility vehicle (SUV)	13	18.8%
13-Sideswipe opp. direction	1	2.9%	Thursday	5	14.3%	07 AM	4	11.4%	Unknown/NA	3	4.3%
15-Angle	2	5.7%	Friday	4	11.4%	08 AM	1	2.9%	Van/mini van	7	10.1%
6-Fixed object	4	11.4%	Saturday	6	14.3%	09 AM	3	8.6%	TOTAL:	69	
TOTAL:	35		Sunday	1	2.9%	11 AM	2	5.7%			
			TOTAL:	35		Noon	2	5.7%			
						1 PM	1	2.9%			
						2 PM	2	5.7%			
						3 PM	5	14.3%			
						4 PM	6	14.3%			
						5 PM	4	11.4%			
						8 PM	1	2.9%			
						10 PM	1	2.9%			
						TOTAL:	35				

Weather Cond	Total	%	Light Cond	Total	%	Road Surface	Total	%	DIRP	Total	%
Clear	32	91.4%	Darkness	1	2.9%	Dry	25	71.4%	East	9	13.0%
Rain	3	8.6%	Darkness/Lighted road	5	14.3%	Ice	2	5.7%	North	14	20.3%
TOTAL:	35		Daylight	29	82.9%	Unknown	3	8.6%	Northeast	1	1.4%



Collision Diagram

1/1/2009 to 12/31/2009

Report No : SDM-RC002
 Sorted by : Mile / Date / ICD

Oak Forest Crash Statistics @ 159th

Crash Route: US006 | From MileStation 165.78 to 165.78 | County : Cook | Intersection Related: Intersections | *See Notes at End of Report.

TOTAL CRASHES	FATAL CRASHES	A INJURY CRASHES	B INJURY CRASHES	C INJURY CRASHES	PROPERTY DAMAGE CRASHES	TOTAL KILLED	TOTAL INJURED	A INJURIES	B INJURIES	C INJURIES
28	0	1	3	6	18	0	17	1	4	12

Type of Crash	Total	%	Day of Wk	Total	%	Hour of Day	Total	%	Vehicle Type	Total	%
10-Turning	9	32.1%	Monday	4	14.3%	Midnight	1	3.6%	Motorcycle (over 150cc)	1	1.8%
11-Rear end	17	60.7%	Tuesday	4	14.3%	01 AM	1	3.6%	Passenger	34	59.6%
12-Sideswipe same direction	2	7.1%	Wednesday	4	14.3%	03 AM	1	3.6%	Pickup	6	10.5%
TOTAL:	28		Thursday	3	10.7%	04 AM	1	3.6%	Sport utility vehicle (SUV)	6	10.5%
			Friday	8	28.6%	05 AM	1	3.6%	Tractor w/ semi-trailer	2	3.5%
			Sunday	5	17.9%	06 AM	2	7.1%	Van/minil van	8	14.0%
			TOTAL:	28		07 AM	1	3.6%	TOTAL:	57	
						10 AM	1	3.6%			
						11 AM	1	3.6%			
						Noon	2	7.1%			
						1 PM	1	3.6%			
						2 PM	3	10.7%			
						3 PM	4	14.3%			
						4 PM	3	10.7%			
						5 PM	1	3.6%			
						6 PM	2	7.1%			
						8 PM	1	3.6%			
						9 PM	1	3.6%			
						TOTAL:	28				



Collision Diagram

1/1/2005 to 12/31/2005

Oak Forest Crash Statistics @ 167 St.

Report No : SDM-RC002
 Sorted by : Mile / Date / ICD

Crash Route: IL050 | From MileStation 35.55 to 35.55 | County : Cook | Intersection Related: Intersections | *See Notes at End of Report.

TOTAL CRASHES	FATAL CRASHES	A INJURY CRASHES	B INJURY CRASHES	C INJURY CRASHES	PROPERTY DAMAGE CRASHES	TOTAL KILLED	TOTAL INJURED	A INJURIES	B INJURIES	C INJURIES
36	0	3	1	1	31	0	7	4	2	1

Type of Crash	Total	%	Day of Wk	Total	%	Hour of Day	Total	%	Vehicle Type	Total	%
10-Turning	12	33.3%	Monday	3	8.3%	01 AM	4	11.1%	Passenger	48	88.6%
11-Rear end	16	44.4%	Tuesday	1	2.8%	04 AM	2	5.6%	Pickup	4	5.7%
12-Sideswipe same direction	3	8.3%	Wednesday	11	30.6%	05 AM	2	5.6%	Sport utility vehicle (SUV)	7	10.0%
15-Angle	1	2.8%	Thursday	7	19.4%	06 AM	2	5.6%	Truck - single unit	1	1.4%
6-Fixed object	3	8.3%	Friday	7	19.4%	07 AM	4	11.1%	Van/mini van	10	14.3%
7-Other object	1	2.8%	Saturday	4	11.1%	09 AM	1	2.8%	TOTAL:	70	
TOTAL:	36		Sunday	3	8.3%	11 AM	2	5.6%			
			TOTAL:	36		Noon	2	5.6%			
						2 PM	3	8.3%			
						3 PM	4	11.1%			
						4 PM	2	5.6%			
						5 PM	2	5.6%			
						6 PM	1	2.8%			
						7 PM	3	8.3%			
						9 PM	1	2.8%			
						11 PM	1	2.8%			
						TOTAL:	36				

Weather Cond	Total	%	Light Cond	Total	%	Road Surface	Total	%	DIRP	Total	%
Clear	22	61.1%	Darkness	4	11.1%	Dry	22	61.1%	East	16	22.9%
Fog/smoke/haze	3	8.3%	Darkness/Lighted road	8	22.2%	Snow or slush	2	5.6%	North	15	21.4%



Illinois Department of Transportation
Division of Traffic Safety

Report No : SDM-RC002
Sorted by : Mile / Date / ICN

Collision Diagram

Oak Forest Crash Statistics @ 167 St.

1/1/2006 to 12/31/2006

Crash Route: IL050 | From MileStation 35.55 to 35.55 | County : Cook | Intersection Related: Intersections | *See Notes at End of Report.

TOTAL CRASHES	FATAL CRASHES	A INJURY CRASHES	B INJURY CRASHES	C INJURY CRASHES	PROPERTY DAMAGE CRASHES	TOTAL KILLED	TOTAL INJURED	A INJURIES	B INJURIES	C INJURIES
32	0	2	4	5	21	0	17	3	4	10

Type of Crash	Total	%	Day of Wk	Total	%	Hour of Day	Total	%	Vehicle Type	Total	%
10-Turning	11	34.4%	Monday	4	12.5%	Midnight	1	3.1%	Passenger	41	63.1%
11-Rear end	14	43.8%	Tuesday	5	15.6%	03 AM	1	3.1%	Pickup	5	7.7%
12-Sideswipe same direction	1	3.1%	Wednesday	5	15.6%	05 AM	1	3.1%	Sport utility vehicle (SUV)	9	13.8%
15-Angle	3	9.4%	Thursday	4	12.5%	06 AM	3	9.4%	Tractor w/ semi-trailer	5	7.7%
6-Fixed object	3	9.4%	Friday	4	12.5%	07 AM	3	9.4%	Truck - single unit	1	1.5%
TOTAL:	32		Saturday	7	21.9%	08 AM	2	6.3%	Van/minivan	4	6.2%
			Sunday	3	9.4%	09 AM	1	3.1%	TOTAL:	65	
			TOTAL:	32		10 AM	1	3.1%			
						Noon	1	3.1%			
						1 PM	3	9.4%			
						2 PM	2	6.3%			
						3 PM	1	3.1%			
						4 PM	1	3.1%			
						5 PM	2	6.3%			
						6 PM	1	3.1%			
						7 PM	3	9.4%			
						8 PM	1	3.1%			
						10 PM	3	9.4%			
						11 PM	1	3.1%			
						TOTAL:	32				



Report No : SDM-RC002
 Sorted by : Mile / Date / ICN

Collision Diagram
 1/1/2007 to 12/31/2007

Oak Forest Crash Statistics @ 167 St.

Crash Route: IL060 | From MileStation 35.55 to 35.55 | County : Cook | Intersection Related: Intersections | *See Notes at End of Report.

TOTAL CRASHES	FATAL CRASHES	A INJURY CRASHES	B INJURY CRASHES	C INJURY CRASHES	PROPERTY DAMAGE CRASHES	TOTAL KILLED	TOTAL INJURED	A INJURIES	B INJURIES	C INJURIES
35	0	1	5	2	22	0	11	1	8	2

Type of Crash	Total	%	Day of Wk	Total	%	Hour of Day	Total	%	Vehicle Type	Total	%
10-Turning	12	34.3%	Monday	5	14.3%	01 AM	1	2.9%	Bus up to 15 pass	1	1.5%
11-Rear end	16	45.7%	Tuesday	4	11.4%	04 AM	1	2.9%	Other	2	3.0%
12-Sideswipe same direction	2	5.7%	Wednesday	7	20.0%	07 AM	3	8.6%	Passenger	38	57.6%
15-Angle	1	2.9%	Thursday	8	22.9%	08 AM	3	8.6%	Pickup	6	9.1%
8-Fixed object	4	11.4%	Friday	8	22.9%	09 AM	2	5.7%	Sport utility vehicle (SUV)	9	13.6%
TOTAL:	35		Saturday	2	5.7%	10 AM	1	2.9%	Tractor w/ semi-trailer	1	1.5%
			Sunday	1	2.9%	11 AM	1	2.9%	Truck -- single unit	3	4.5%
			TOTAL:	35		Noon	2	5.7%	Unknown/NA	2	3.0%
						2 PM	1	2.9%	Van/minivan	4	6.1%
						3 PM	4	11.4%	TOTAL:	66	
						4 PM	6	17.1%			
						5 PM	4	11.4%			
						6 PM	2	5.7%			
						8 PM	2	5.7%			
						10 PM	2	5.7%			
						TOTAL:	35				

Weather Cond	Total	%	Light Cond	Total	%	Road Surface	Total	%	DIRP	Total	%
Clear	27	77.1%	Darkness	1	2.9%	Dry	21	60.0%	East	11	16.7%
Fog/smoke/haze	1	2.9%	Darkness/Lighted road	8	22.9%	Unknown	3	8.6%	North	19	28.8%
Rain	6	17.1%	Daylight	25	71.4%	Wet	11	31.4%	Northeast	3	4.5%



Report No : SDM-RC002
Sorted by : Mile / Date / ICN

Collision Diagram

Oak Forest Crash Statistics @ 167 St.

1/1/2008 to 12/31/2008

Crash Route: IL050 | From MileStation 35.55 to 35.55 | County : Cook | Intersection Related: Intersections | *See Notes at End of Report.

TOTAL CRASHES	FATAL CRASHES	A INJURY CRASHES	B INJURY CRASHES	C INJURY CRASHES	PROPERTY DAMAGE CRASHES	TOTAL KILLED	TOTAL INJURED	A INJURIES	B INJURIES	C INJURIES
25	0	1	3	1	20	0	7	1	5	1

Type of Crash	Total	%	Day of Wk	Total	%	Hour of Day	Total	%	Vehicle Type	Total	%
10-Turning	10	40.0%	Monday	6	24.0%	03 AM	1	4.0%	Motorcycle (over 150cc)	1	1.9%
11-Rear end	13	52.0%	Tuesday	5	20.0%	06 AM	1	4.0%	Passenger	35	67.3%
15-Angle	1	4.0%	Wednesday	1	4.0%	07 AM	1	4.0%	Pickup	6	11.5%
6-Fixed object	1	4.0%	Thursday	2	8.0%	08 AM	2	8.0%	Sport utility vehicle (SUV)	5	9.6%
TOTAL:	25		Friday	3	12.0%	09 AM	1	4.0%	Tractor w/ semi-trailer	1	1.9%
			Saturday	4	16.0%	Noon	1	4.0%	Truck - single unit	1	1.9%
			Sunday	4	16.0%	1 PM	2	8.0%	Van/mini van	3	5.8%
			TOTAL:	25		3 PM	1	4.0%	TOTAL:	52	
						4 PM	3	12.0%			
						5 PM	4	16.0%			
						6 PM	3	12.0%			
						7 PM	2	8.0%			
						9 PM	1	4.0%			
						10 PM	1	4.0%			
						11 PM	1	4.0%			
						TOTAL:	25				

Weather Cond	Total	%	Light Cond	Total	%	Road Surface	Total	%	DIRP	Total	%
Clear	16	64.0%	Darkness	1	4.0%	Dry	14	56.0%	East	13	25.0%
Rain	5	20.0%	Darkness/Lighted road	8	32.0%	Ice	2	8.0%	North	11	21.2%
Snow	4	16.0%	Daylight	16	64.0%	Snow or slush	3	12.0%	Northeast	1	1.9%



Illinois Department of Transportation
Division of Traffic Safety

Report No : SDM-RC002
Sorted by : Mile / Date / ICM

Oak Forest Crash Statistics @ 167 St.

Collision Diagram

11/1/2009 to 12/31/2009

Crash Route: IL050 | From MileStation 35.61 to 35.61 | County : Cook | Intersection Related: Intersections | *See Notes at End of Report.

TOTAL CRASHES	FATAL CRASHES	A INJURY CRASHES	B INJURY CRASHES	C INJURY CRASHES	PROPERTY DAMAGE CRASHES	TOTAL KILLED	TOTAL INJURED	A INJURIES	B INJURIES	C INJURIES
24	0	0	2	3	19	0	10	0	0	3

Type of Crash	Total	%	Day of Wk	Total	%	Hour of Day	Total	%	Vehicle Type	Total	%
10-Turning	10	41.7%	Monday	3	12.5%	04 AM	1	4.2%	Motorcycle (over 150cc)	1	2.1%
11-Rear end	9	37.5%	Tuesday	2	8.3%	06 AM	3	12.5%	Passenger	29	61.7%
12-Sideswipe same direction	4	16.7%	Wednesday	7	29.2%	07 AM	5	20.8%	Pickup	3	6.4%
6-Fixed object	1	4.2%	Thursday	3	12.5%	08 AM	2	8.3%	Sport utility vehicle (SUV)	10	21.3%
TOTAL:	24		Friday	5	20.8%	10 AM	1	4.2%	Tractor w/ semi-trailer	1	2.1%
			Saturday	4	16.7%	11 AM	1	4.2%	Unknown/NA	1	2.1%
			TOTAL:	24		Noon	1	4.2%	Van/mini van	2	4.3%
						3 PM	2	8.3%	TOTAL:	47	
						4 PM	2	8.3%			
						5 PM	1	4.2%			
						6 PM	2	8.3%			
						7 PM	2	8.3%			
						10 PM	1	4.2%			
						TOTAL:	24				

Weather Cond	Total	%	Light Cond	Total	%	Road Surface	Total	%	DIRP	Total	%
Clear	20	83.3%	Darkness	1	4.2%	Dry	19	79.2%	East	12	25.5%
Rain	3	12.5%	Darkness/Lighted road	4	16.7%	Snow or slush	1	4.2%	North	8	17.0%
Snow	1	4.2%	Dawn	2	8.3%	Unknown	1	4.2%	Northeast	1	2.1%
TOTAL:	24		Daylight	17	70.8%	Wet	3	12.5%	Northwest	3	6.4%
			TOTAL:	24		TOTAL:	24		South	7	14.9%